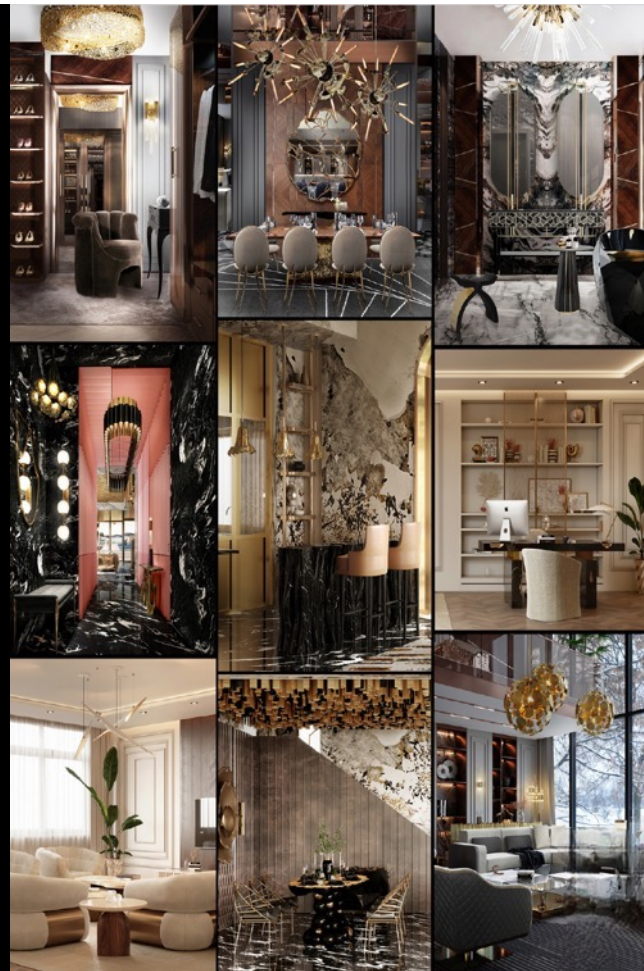




Find Your Inspiration

Matchmaking connecting with the world's finest architects and designers



Beyond Traditional Services



Bespoke Matchmaking

Connecting UHNWI with architects and designers based on individual preferences and lifestyle needs



Comprehensive Framework

Defined stages gathering insights, refining preferences, and aligning with market conditions



Strategic Alignment

Balancing personal vision with market trends to maximize property value and appeal



Understanding You

The foundation of exceptional design begins with deep understanding. We employ sophisticated techniques to capture every nuance of your lifestyle, preferences, and aspirations.





Discovering Your Vision

01

Client Questionnaires

Structured forms extracting detailed information about lifestyle, preferences, architectural style inclinations, desired features, and budget considerations

02

In-Depth Interviews

Personal conversations delving deeper into aspirations, providing valuable context and revealing the nuances of your vision

03

Lifestyle Analysis

Comprehensive assessment of daily routines, family dynamics, and personal interests to identify key design elements

Key Areas We Explore



Personal Lifestyle & Values

Understanding how you live—whether you frequently entertain guests, prioritize family functionality, or seek serene private retreats—shapes every design decision.



Materials & Amenities

Discussing specific materials, sustainable options, high-end finishes, and desired amenities from swimming pools to wine cellars and home theaters.



Architectural Style Preferences

Identifying your aesthetic inclinations—modern minimalism, classical grandeur, or eclectic fusion—ensures alignment with architects who excel in your preferred style.



Budget & Timeline

Establishing clear budget frameworks and timeline expectations ensures realistic planning and efficient project management from concept to completion.



The Outline Brief: Your Vision Documented

The outline brief serves as the foundational document capturing your complete vision, preferences, and requirements. It acts as a roadmap for architects and designers, ensuring everyone involved remains aligned with your goals throughout the project journey.

This living document remains adaptable, allowing for refinements based on market insights gathered during our KYM (Know Your Market) process, ensuring your project reflects both personal taste and strategic market positioning.

1

Architectural Style

Clearly defined vision from contemporary to classical

2

Materials & Finishes

Preferred materials ensuring quality and taste

3

Amenities & Features

Must-have elements enhancing lifestyle

4

Budget Guidelines

Framework for informed decision-making

Our Commitment to Your Vision

Creating Harmony and Alignment

The collaborative efforts between your architect, interior designer, and LRA ensure your final living environment authentically reflects your aspirations. We combine structural integrity with functional beauty, meticulous attention to detail with big-picture vision.

Excellence Through Partnership

LRA remains dedicated to supporting you throughout the entire journey. From initial selection through project completion, we ensure your vision is realized to its fullest potential. Our commitment to excellence means the final product doesn't just meet expectations—it exceeds them, creating a home that inspires for years to come.



The Foundation: Why Selection Matters

The Architect's Vision

Your architect shapes the bones of your home—from structural integrity to aesthetic appeal. They orchestrate spatial planning that maximizes comfort, design exteriors that captivate, and integrate sustainability that reduces environmental impact while enhancing long-term value.

Every decision affects how your home functions, feels, and fits within its environment. The right architect balances beauty with practicality, creating spaces that flow naturally and inspire daily.

The Interior Designer's Touch

Your interior designer translates architectural vision into lived experience. They craft functional layouts for daily activities and entertaining, establish aesthetic harmony through furnishings and color, and deliver custom solutions for storage, lighting, and technology integration.

The designer's expertise ensures every room serves your lifestyle while reflecting your personal style—transforming architectural spaces into your home.

LRA's Comprehensive Review Process

01

Portfolio Review

We conduct thorough evaluations of each professional's body of work, examining diversity across project types, sizes, and styles.

This includes analyzing their ability to incorporate current design trends while maintaining timeless quality, plus assessing technical proficiency in space planning, material selection, and code compliance.

02

Compatibility Assessment

We ensure the architect's design philosophy aligns seamlessly with your project goals.

This involves evaluating vision alignment between modern and traditional preferences, reviewing material choices for aesthetic and sustainability matches, and confirming the architect's approach resonates with your aspirations.

03

Style Cohesion Analysis

We examine how your chosen architect and interior designer will collaborate effectively.

Our analysis focuses on shared design language for seamless transitions, coordinated color palettes and textures, and unified material integration throughout your home to create harmonious spaces.



Finding Your Perfect Architect

LRA utilizes an extensive, meticulously curated database of world-class architects to identify the optimal match for your project. Our selection process considers both technical excellence and interpersonal compatibility, ensuring a productive and enjoyable collaboration.



The Power of Our Comprehensive Database



Detailed Professional Profiles

Every architect and interior designer in our database has a comprehensive profile featuring specialization tags, visual documentation of past projects with before-and-after transformations, client testimonials, and industry awards that highlight their expertise and credibility.



Client Avatar Development

We create detailed avatars representing your tastes, lifestyle, and work style. These include demographics like family composition and lifestyle habits, aesthetic preferences from minimalist to bohemian, and functionality needs such as home offices, children's play areas, or entertainment spaces.



Intelligent Matching

Our sophisticated matching process cross-references your avatar with professional profiles, evaluating compatibility based on design styles, project experience, and client feedback. We shortlist 2-3 architect-designer pairs, ensuring diverse styles while maintaining alignment with your vision.



Our Architect Database Attributes

Design Styles

Cataloged by primary architectural focus—modernist, classical, contemporary, traditional, or eclectic

Specializations

Expertise areas including sustainable design, historic restoration, coastal properties, or mountain estates

Firm Profile

Office size, location, team composition, and capacity for project management

Financial Structure

Fee arrangements, typical project costs, and budget management track record

Performance History

Timeline adherence, client satisfaction ratings, and portfolio of completed luxury projects

Personality Assessment

Communication Style

Identify preferred interaction methods.

Compatibility Analysis

Evaluate potential relationship dynamics.



Collaboration Preferences

Assess openness to feedback and partnership.

Decision-Making Profile

Analyze approach to choices and changes.

Presenting the Shortlist

We prepare comprehensive presentations for each shortlisted architect, including detailed profiles, curated portfolios, and relevant project case studies.

Throughout this process, we encourage your active participation and input. Our collaborative approach ensures you feel confident and informed in your decision-making, fostering ownership of the selection process. We facilitate meetings, coordinate portfolio reviews, and provide expert guidance while respecting your ultimate authority in choosing your design partner.

Visual Storytelling

Compelling presentation of each candidate's work.

Transparent Evaluation

Clear rationale for each recommendation.

Client Feedback

Structured format to capture initial impressions.



LUCA DINI



Firm Awards

- 2018 - Career Award
- 2016 - Platinum Award
- 2015 - Crystal Globe USA Grand Prix 2015
- 2014 - First Sustainable European Trade Fair - LEED EB OAH certification
- 2014 - Architizer A+ Award
- 2013 - Idea Topo Awards
- 2012 - Wallpaper* Design Awards 2012
- 2012 - Global Urbanism Award 2012
- 2012 - Medal of the Presidency of the Council of Ministers
- 2011 - International Award "Ignacio Stone for Culture"
- 2009 - Gold Medal Award
- 2007 - International Architecture Awards 2007



In 1998 Luca Cini created his own team capable of designing bespoke projects and transforming them into innovative solutions. Over the years, he has received various international awards and worked with leading Italian and European shipyards. He is not only known for designing super-yachts, but also state-of-the-art and prominent buildings. His avant-garde concepts have evolved over time into revolutionary and ambitious urban development projects. He sees innovation as a synergy between two entities, design and architecture, and also expresses this in his collections for notable luxury brands in the design world.

- **Yacht Capital Awards 2001**
- **World Yachting Trophy 2007**
- **Showboats International Awards 2007**
- **Showboats International Awards 2008**
- **Besse D'Arno Award 2008**
- **World Yachting Trophy 2009**
- **Showboats International Awards 2009**
- **International Yacht & Afloat Star Awards 2010**
- **World Superyacht Awards 2014**
- **Monaco Yacht Show Awards 2014**
- **Robb Report - Best Of The Best 2014**
- **Showboats Design Awards 2014**
- **International Yacht & Afloat Star Awards 2014**
- **World Superyacht Awards 2015**



Selecting Your Interior Designer

The interior design phase focuses on finding designers who can translate the architectural vision into cohesive, livable spaces that authentically reflect your personal style. This stage is crucial for ensuring that the overall aesthetic harmonizes seamlessly with the architectural framework established in collaboration with your architect.

We prioritize designers whose philosophy and portfolio demonstrate an ability to create interiors that are both visually stunning and functionally exceptional. The designer must complement the architectural style while bringing their unique creative perspective to enhance the living experience.

1

Portfolio Review

Evaluating past projects and design philosophy for alignment with your vision

2

Architectural Compatibility

Ensuring the designer's approach harmonizes with the architectural plan

3

Style Cohesion

Confirming seamless integration of all design elements

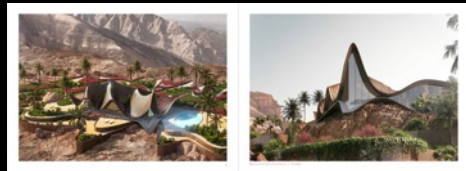


MARIO CUCINELLA
FOUNDER AND CREATIVE DIRECTOR OF MCA

Mario Cucinella is the founder of Mario Cucinella Architects, based in Bologna and Milan. In 2009, he founded School of Sustainability, a post-graduate training center aimed at training professionals in the field of sustainability. In 2006, he was curator of the Italian Pavilion at the 10th International Architecture Exhibition of the Venice Biennale with the exhibition "Designing Italy". In 2009, he founded MCA Design, focused on the internal and external design of sustainable spaces with more collaborations with the most famous firms in Italy, companies. The impact of his work has been recognized with the following fellowship of the American Institute of Architects (2017) and with the International Fellowship of the Royal Institute of British Architects (2016). In 2018, MCA participated in COP24, the UN Climate Change Conference in Katowice, with the TELA - Technology and City project designed with RHP, displayed in the Bull Better New urban exhibition.

Prize Awards

- 2010 - Architecture Awards, (Pirelli, USA) finalist in the category (Built Commercial) Project - Lingard Group Headquarters, Milan, Italy
- 2010 - AIA Awards 2010 (London, USA) finalist in the category (Built - Other) Project - Aragona Italia, Biennale di Architettura Venezia, Italy
- 2010 - European Sustainability Award (Bologna, Italy) winner in the category (Built Commercial) Project - Lingard Group Headquarters, Milan, Italy
- 2017 - Honorary Fellowship Award (New York, USA) by the American Institute of Architects to Mario Cucinella for exceptional work and contribution to architecture and society on an international level
- 2018 - RIBA International Fellowship (London, UK) to Mario Cucinella by the RIBA Committee of the Royal Institute of British Architects (2018)



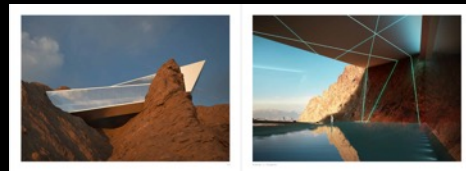
NUNO FONTARRA
PARTNER | ARCHITECT

Highly creative, innovative, self-driven, Nuno has propelled the conceptualization and design development of many of Mecanoo's most innovative and sculptural projects including the National Museum of Natural History, United Arab Emirates, National Housing Centre for the Arts (Oma Abu Dhabi), Taiwan, Lingang Cultural Centre, Shanghai in China and Landscape Theater and Conference Centre, Spain, amongst others. He has led multiple competition designs including the Real Garden Club, Saudi Arabia, Paga Towers, Hong Kong and an urban campus for the European Space Agency, Germany.

Nuno's method arises from a comprehensive understanding of the built environment, balanced with a free thinking international approach, derived from his global experience. Combining an on-site designer and engagement, Nuno seeks to instill ideas from a complete group of stakeholders, into clear and concrete strategies, harmonizing on-site site conditions. Nuno has taught at TU Delft, Pira Jussu Institute in Rotterdam and Utrecht University in Delft, Netherlands.

Prize Awards

- 2012 - RIBA Awards, Biennale Award, finalist category for KAMPUS, Manchester, United Kingdom.
- International Architecture Award, Library category for Storms Maritime Foundation Library, New York, USA.
- MCA Award - World Landscape Architecture - Award of Excellence in the Built Urban Design category for Tachung Green Corridor, Taichung, Taiwan.
- 2014 RIBA Award, Large Project of the Year Award for Mecanoo Engineering Campus Development, Manchester, United Kingdom.
- MCA Design Award (London) for Real Garden Club, Saudi Arabia, Hong Kong, USA.
- European Union Prize for Contemporary Architecture - Merit van der Stapel Award 2012, architectural project for Real Garden Club, Paga, the Netherlands.
- Architecture Awards Jury Winner in the Best in Europe category.



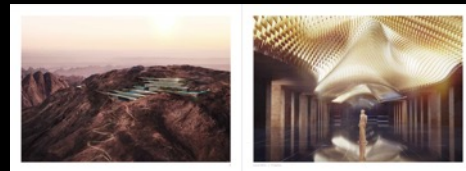
DAVID ROCKWELL, FAIA
FOUNDER & PRESIDENT

David Rockwell, FAIA, has long harbored a fascination with innovative environments. In 1984, he founded Rockwell Group, a cross-disciplinary architecture and design practice based in New York City, with satellite offices in Miami and Los Angeles. His work ranges from restaurants, hotels, airport terminals, and hospitals, to hotels, museum exhibitions, and Broadway sets.

David Rockwell includes the 2019 Pritzker Prize for Architecture for the medical Bioscience Hub, Rockwell Group for production design for the Oscars (2001 and 2012), the AIA New York Chapter President's Award, the 2008 National Design Award from the Cooper-Hewitt National Design Museum for outstanding achievement in Interior Design, and the Presidential Design Award for the redesign of the Grand Central Terminal. Rockwell Group was named the Best Company 2008, 2014 and 2015 as one of the most innovative design practices in their annual World's 50 Most Innovative Companies issue.

Prize Awards

- 2016 Pritzker Prize for Architecture for the medical Bioscience Hub
- 2019 AIA New York Chapter President's Award
- 2008 National Design Award from the Cooper-Hewitt National Design Museum for outstanding achievement in Interior Design
- Presidential Design Award for the renovation of the Grand Central Terminal





From Selection to Collaboration

1

Curated Presentation

We present your shortlisted architect-designer pairs with high-quality visual references, detailed project descriptions, and transparent rationale explaining how each pairing complements your unique avatar and lifestyle needs.

2

Interactive Consultation

Through facilitated discussions and interactive sessions, we gather your feedback, address concerns, and refine selections. Your input shapes the final choices, ensuring the professionals resonate with your vision and expectations.

3

Unified Vision Launch

Once selections are finalized, we organize collaborative kickoff meetings between your chosen architect and interior designer. We establish regular check-ins throughout the project to maintain alignment, address emerging issues, and ensure cohesive execution.

Facilitating Connections



Schedule Meetings

Coordinate high-value interactions.



Structure Discussions

Provide focused meeting agendas.



Observe Dynamics

Assess interpersonal chemistry.



Document Impressions

Capture detailed meeting outcomes.



Final Selection

Decision Matrix

Weigh pros and cons systematically

- Design philosophy alignment
- Communication compatibility
- Budget approach

Reflection Process

Guided discussion of impression

- Personal connection
- Trust factors
- Vision alignment

Final Documentation

Comprehensive selection report

- Selection rationale
- Decision factors
- Next steps

Project Kickoff



Project Timeline

Establish clear milestones and expectations.



Formalize Agreement

Execute contracts with transparent terms.



Communication Plan

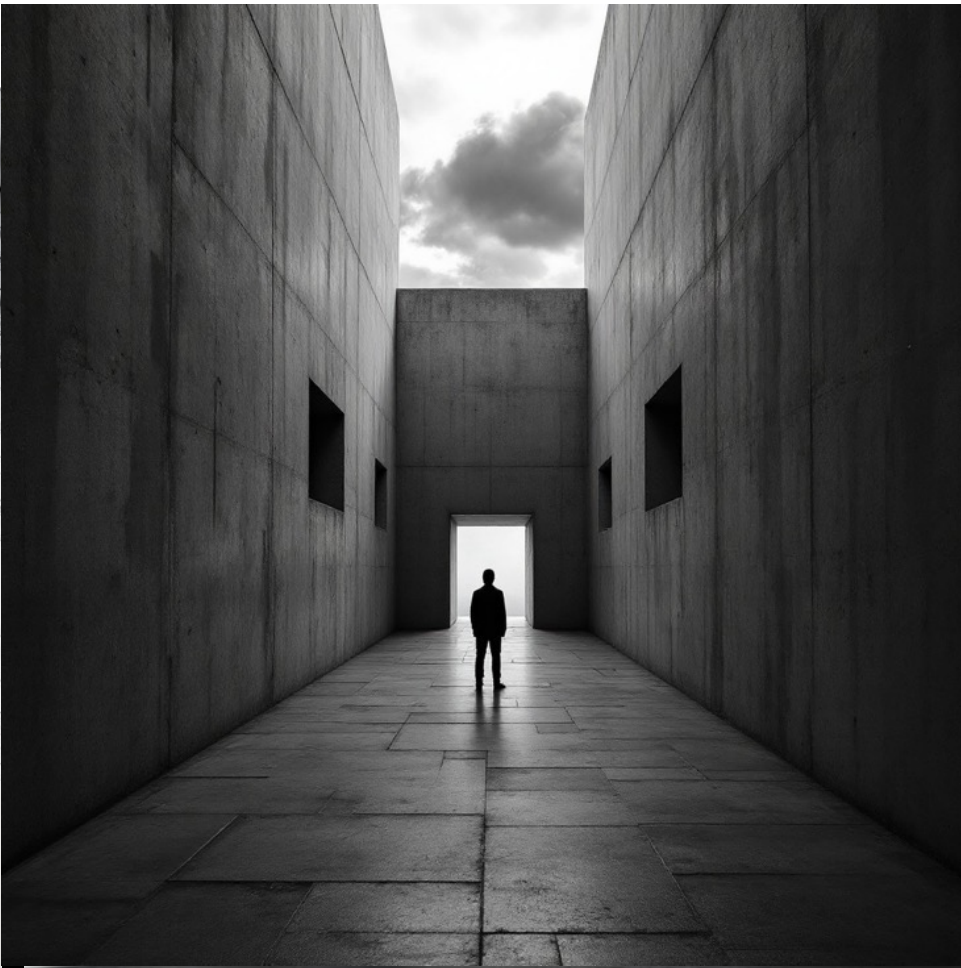
Define cadence and methods for updates.



Launch Design Phase

Transition smoothly into active creation.





"The journey
not the arrival matters."

T.S. Eliot



Thank You.

Concept and Execution by MLX Consulting
info@not-4.sale